

# THE CRIMSON & GOLD



ZETA CHI ALUMNI ASSOCIATION  
JULY 2011  
VOLUME 2011, No.

## House Improvement



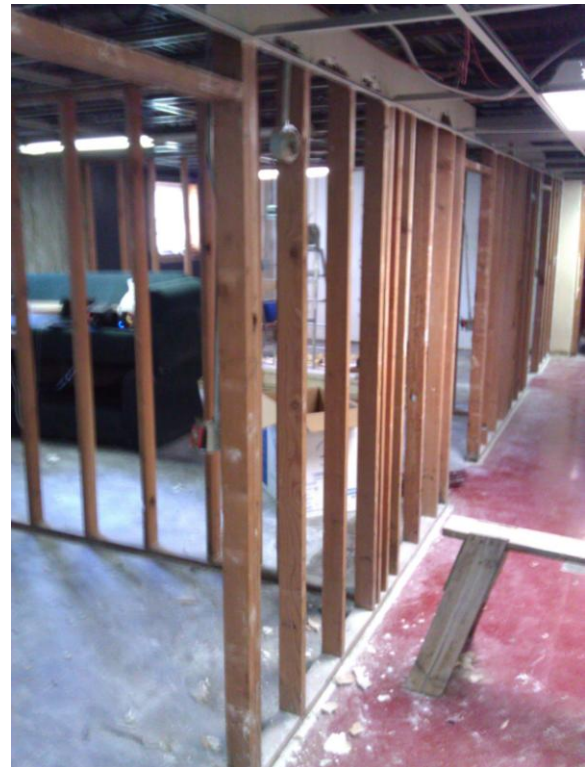
Brickwork Back Addition 2011

UPDATE: At our trustee meeting we had the first good look at the improvements. We have begun two projects the renovation to the back of the house opening up three more usable rooms for the guys. The windows are being replaced for \$4,114. We are removing the old siding and replacing it with brick to match the addition for \$19,881. Some of you may have watched it being built, back in the day.

The HVAC is being replaced as we found we had carbon monoxide leaking. We are replacing it with heat pump units. (\$2161) We also found the Electrical box needed replacement and are

also putting all incoming lines underground estimated at \$5710.

The rooms in the area called the swamp are completely dry and are getting all new fire retardant sheet rock along with cleanup. (\$6200)



The summer live-ins are completing this project and we are only paying for supplies.

On August 8th the work week crew will show up and will work on more of our projects like the new paint for the Chapter room and landscaping around the back of the house and yard.

We still have a few thousand we need to spend to finish up. We have \$7,000 in seed money but are looking for these seeds to germinate some additional funds.



The trustees are asking all of our brothers to assist. The current funding is a loan from our educational foundation. We need to replace those funds and pay the loan back.

Please consider what you might be able to do. The mailing address is Zeta Chi Educational Foundation, PO Box 294, Baldwin City, KS 66006

Thank you and look for picture updates to follow.  
- Dennis Seager

## Treasurer's Report



Taken Stag 2006

Financial status:

The Alumni Association holds a little over eight thousand dollars in the checking account before paying our insurance premiums about seven thousand dollars. The General Liability policy is a little higher this year than in the past. We are owed about two thousand by the active chapter for the May rent.

The house was inspected by our insurance carrier who made the following recommendations:

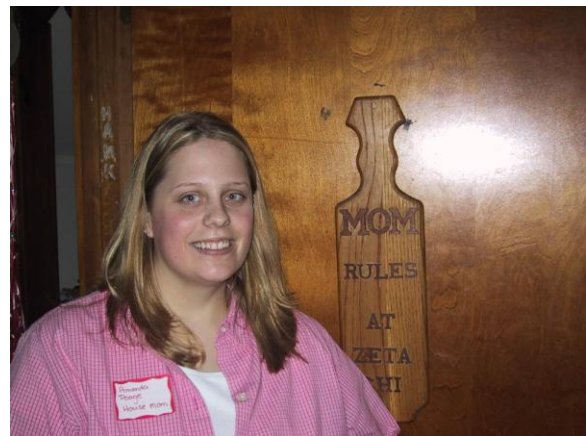
1. Filters, Hoods, and ductwork need to be cleaned
2. Fire Extinguishers need to be tagged. (We should have this done at the beginning of every school year.
3. Check the mold growth on the ceiling tiles on the third floor bathroom, replace tiles (not with the paper tiles) and take precautions to prevent future growth.
4. They would like a Formal Policy prohibiting pets.

Trace Gaskell

## Spring Grades

The scholarship cup is retained once again. Congratulations to the men of Zeta Chi. Spring 2011 semester GPA 3.22 and the cumulative average, 3.26 reveals what every Zeta Chi knows, we are number one.

## ZX House Mother



This was the last stag as the ZX housemother, Amanda Poage will be moving on. She did a wonderful job working with the men of Zeta Chi, she will be missed. Please wish Amanda all the luck in her new future. And thanks for all the cookies.



The actives sang one last song. Can you guess what it was?

## HS Seniors BU Visit

Senior Visit Weekend, Baldwin City will be Friday and Saturday, November 4 and 5, 2011

Baker University is hosting prospective students. It is an opportunity for High School Seniors to give Baker the “once over.” Visit campus and learn about academic programs, co-curricular programs, campus life, scholarships and financial aid.

Current students will lead tours of our beautiful historic campus, showing you our academic, living and athletic facilities, and also answering your questions about college life.

Visit with professors or staff members from your specific academic area of study.

Learn about student activities, residence life, wellness and the day-to-day opportunities to get involved in the Baker community.

Seniors can register for the weekend at the following URL:

<http://www.bakeru.edu/baldwin/prospective-students/visit-campus>

If they need a map they can download one from

[http://www.bakeru.edu/images/pdf/TN\\_act\\_us/CampusMap.pdf](http://www.bakeru.edu/images/pdf/TN_act_us/CampusMap.pdf)

Contact the admissions department, <http://www.bakeru.edu/> for more details and pass the information on to any high school

students that you think might be interested. We chose Baker they might also.

## Grand Memories



At stag much of the conversation centers on the telling and retelling stories of days gone by. In turn, they will show up in this newsletter. It may be old news, but for some it will seem like just yesterday.



Write down your grand memory and send it to the alumni association or the newsletter, [BobBurnham77@yahoo.com](mailto:BobBurnham77@yahoo.com). As many as possible will be published in the newsletter. If there are enough then we may be able to publish them altogether. So, keep them coming.

The Crimson & Gold is a Publication of  
The Zeta Chi Alumni Association  
P.O. Box 294  
Baldwin City, KS 66006-0294  
[www.zetachi.org](http://www.zetachi.org)

Editor: Robert Burnham, '77  
[BobBurnham77@yahoo.com](mailto:BobBurnham77@yahoo.com)

# Zeta Chi Alumni Association Officers

---

*President* Steve Sublett '58  
*Vice-President* Jeremy Hogue '06  
*Secretary* Cody Howard '97  
*Treasurer* Trace Gaskell '94

email: [subsco@sbcglobal.net](mailto:subsco@sbcglobal.net)  
email: [eagle\\_wizard@hotmail.com](mailto:eagle_wizard@hotmail.com)  
email: [dustincodyhoward@hotmail.com](mailto:dustincodyhoward@hotmail.com)  
email: [gaskella@bv.com](mailto:gaskella@bv.com)

---

## Zeta Chi Building Fund

PLEASE MAKE YOUR CHECKS PAYABLE TO:  
**ZETA CHI ALUMNI ASSOCIATION**  
**P.O. BOX 294**  
**BALDWIN CITY, KANSAS 66006-0294**

---

- YES, I am paying my \$25.00 2011-2012 Zeta Chi Alumni Association Dues in order to support the publication of the newsletter.
- YES, I am donating \$100.00 to the Zeta Chi Building Fund capital campaign.
- YES, I am donating \$\_\_\_\_\_ (please provide exact amount) for the building fund.
  - Brotherhood - \$100 - \$499
  - Crimson/Gold - \$500-\$999
  - Wreath/Scroll - \$1000 - \$4999
  - ZX Lamp - \$5000+
  
- New Address or changes please check.

\_\_\_\_\_  
Name Year

\_\_\_\_\_  
Address

enclosed amount \$ \_\_\_\_\_

\_\_\_\_\_  
City, State, Zip

\_\_\_\_\_  
email address May we publish it on the ZX website? Yes\_\_ No\_\_

\_\_\_\_\_  
Profession

\_\_\_\_\_  
Company Name

The Zeta Chi Alumni Association is a non-profit organization. Contributions to the Zeta Chi Education Fund, excluding the annual \$25.00 membership dues, are tax-deductible.